

# How to Draw a Cartoon Bee



In today's guide we will be learning how to draw a bee. This very simple tutorial consists of 14 easy steps. If you follow the step-by-step instructions you can have your very own buzzing bee sitting on the paper in front of you!

Bees are very simple creatures to draw. They are made of very simple, round shapes. These shapes should take a minimal effort to draw.

Begin sketching very lightly, you don't want to make any of your sketch lines too dark, this will just make it harder for you to erase them in the long run.

Before you begin the sketching process, make sure to visualize the size of your bee. This will help you decide how big to draw each shape.

In the guide below, each step is highlighted in a light blue color.

You don't need any special pens or tools. A regular pencil, eraser, and paper are all you need. If you want, you can also color the drawing with colored pencils or pens.

## Step-by-Step Instructions



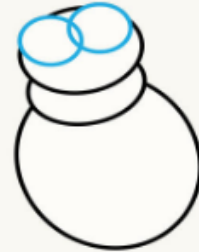
Start with a circle. This will be the base and the abdomen of your bee.



Sitting at the top of your circle, place an oval sitting horizontal.



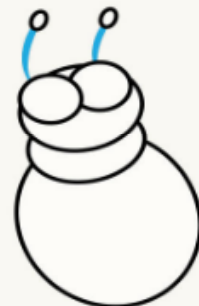
Place another oval at the top of the shape you just drew. This will be your bee's head.



On the top portion of the oval, draw two circles right next to each other, these will be the eyes.



Above the two eyes, place two small ovals, these will be the ends of the bee's



Draw two lines connecting the ends to the back of the eyes.

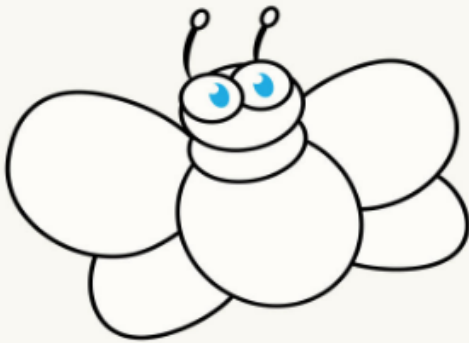
antennae.



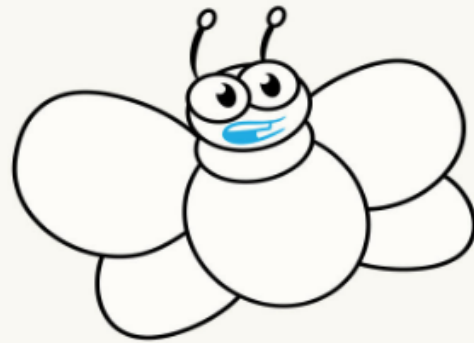
Draw two U-shapes attaching to each side of your bee's body. These will be the wings of your bee.



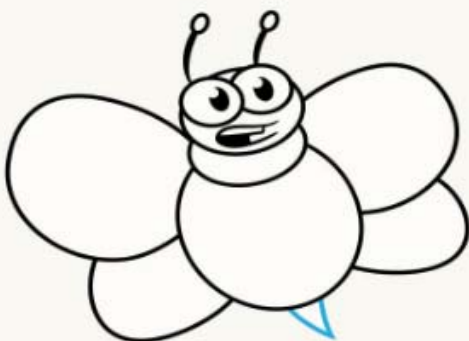
Add two similar and smaller U-shapes just below the wings.



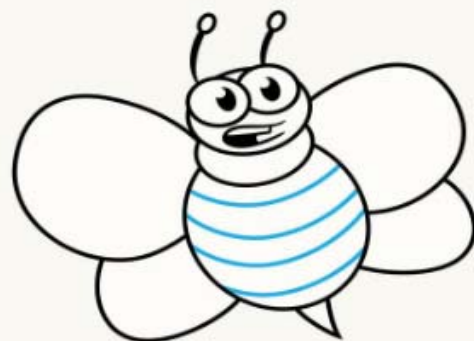
Now, add two ovals inside your eyes, these are your bee's pupils. Make sure to add a notch in the shapes, this will give the illusion of a glare.



Draw a sideways U-shape just below the eyes. There should be a rectangular shape emerging from behind the U-shape. This will be the bee's teeth and mouth.



Draw a tiny triangular shape under the



Place two stripes laying horizontally across

body of the bee, this will be the stinger.

your bees abdomen. Make sure the lines follow the curve of the bee's body.



Add detail to the wings.



Add color and bring your bee drawing to life!

See, that was pretty easy. If you'd like to find more easy drawing guides, check out my website or social media pages:

Website: [easydrawingguides.com](http://easydrawingguides.com)

Facebook: [easydrawingguides](https://www.facebook.com/easydrawingguides)

Twitter: [easydrawingguide](https://twitter.com/easydrawingguide)

Pinterest: [easydrawingguid](https://www.pinterest.com/easydrawingguid)

YouTube: [Easy Drawing Guides](https://www.youtube.com/EasyDrawingGuides)

Find more easy drawing instructions on [easydrawingguides.com](http://easydrawingguides.com).

**Easy Drawing Guides**

